



Havering
LONDON BOROUGH

Cleaner, Safer, Prouder *Together*

www.havering.gov.uk

CRIME & DISORDER SUB-COMMITTEE

SEPT 2020

Covid – 19 Update for Environmental Services

Sue Harper- Interim AD, Environment

Louise Watkinson – Head of Public Protection

Karen Proudfoot – Interim Head of Enforcement & Safety

COVID19 Compliance

1,214 additional hours committed to encouraging public compliance with COVID19 regulations.

26 March 2020



The Health Protection (Coronavirus, Restrictions) (England) Regulations 2020 came into effect.

9 April 2020



The Council's COVID19 Compliance Team started with a remit to Engage, Explain and Encourage

13 May 2020



Restrictions begin easing allowing open-air recreation and meeting a member of another household.

COVID19 Compliance

1 June 2020



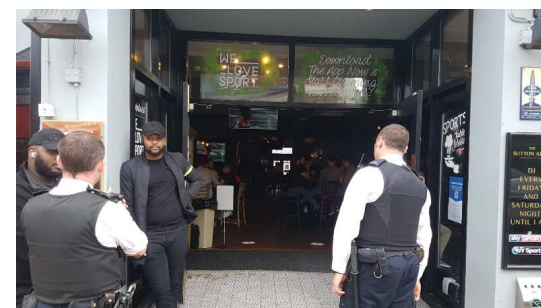
Outdoor sports amenities and outdoor non-food markets may reopen. People can leave home and gatherings outdoors of up to 6 people are permitted.

15 June 2020



re-opening of non-essential retail shops and public-facing businesses apart from specified business, mainly hospitality and entertainment businesses

4 July 2020



Re-opening of pubs, bars and restaurants

Cleaner, Safer, Prouder Together

www.havering.gov.uk

COVID19 Compliance

H&S Covid Security



Compliance Patrols



- 1,201 compliance visits done
- 80 extra weekend shifts done
- 115 H&S Inspections done since 25/8
- 7 of the H&S Inspections non compliant with revisits and action taken.

Cleaner, Safer, Prouder Together

www.havering.gov.uk

Immediate Impact: General

- Business Continuity plans enacted across services
- From late March, all office based staff told to work from home
- Some staff were moved to support other work areas within the Council
- % of staff were 'unable' to work – reduce service levels, stop some services, use of agency staff
- Demand for some services reduced due to reduced public movement
- Loss of income
- Loss of external funding – mainly TfL
- Change patterns of work to allow staff to social distance

Public Protection: Initial Impact

- Stopped inspection visits
- Introduced measures for ensuring compliance amongst those businesses allowed to remain open
- Fast pace of amount of new government regulation
- Delayed decision on new HMO Extended Additional Licensing and Selective Licensing

Public Protection: Current Position

- Licensing hearings being held virtually
- Leading on Outbreak Management Plan for Havering – additional resource available
- Continue to support businesses as they are allowed to reopen – now only night clubs that are closed
- Pavement Licensing now available to businesses

Enforcement: Initial Impact

- Reduction in front line staff available – 20%
- Shielding staff moved to support other services
- Demand for front-line enforcement services changed with the COVID19 restrictions in place
- CCTV service continued to operate as normal

Enforcement: Current Position

- Transition to the new Enforcement structure began on 1st June – resulting in front line resource increasing to 55%
- Continue to provide a front-line response to complaints and enquiries and undertake investigations.

Community Safety: Immediate Impact

- Office based staff – working from home
- Crime reduced across borough – especially in town centres and changed
- Concerns re potential increase in domestic violence during lockdown so MARAC held virtually with increased frequency

Community Safety – Current Position

- Where possible services continue to be delivered remotely.
- Support services have adapted their method of delivery to be remote where appropriate
- Crime levels are increasing